

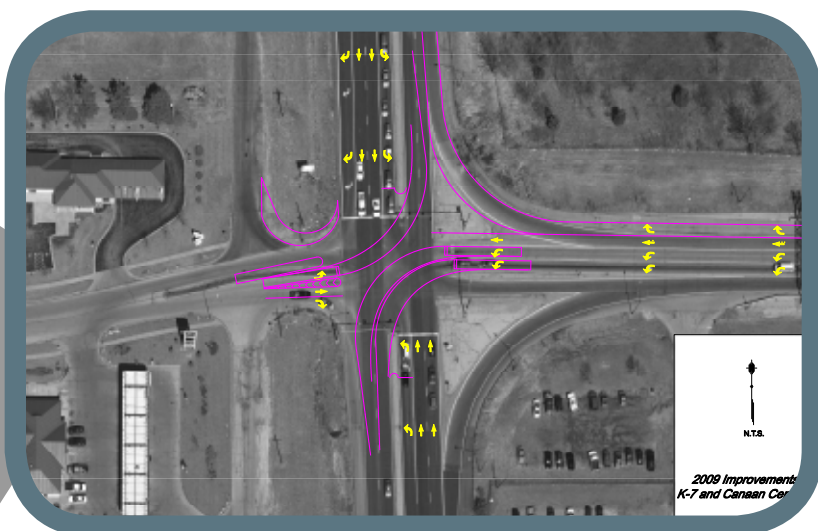
Planning Today **FOR THE NEEDS AHEAD**

The existing K-7 and I-70 Interchange in Bonner Springs is a major system-to-system interchange. Thousands of motorists use it everyday and traffic is expected to increase in the future. The preliminary design plans that are on display at today's meeting are based on the conceptual improvement alternative that was developed as part of the K-7 Corridor Management Plan (2006). The community reviewed the K-7 and I-70 Interchange Concept during a public meeting last year. Both the concept and preliminary design propose to change the current interchange configuration from a single interchange to three new interchanges that work together as one complete system. New interchanges are being designed for: K-7 at 130th Street, K-7 at I-70, and K-7 at Kansas Avenue. The preliminary design of the Interchange Concept will respond to the area's increasing capacity and economic development needs, while improving safety.

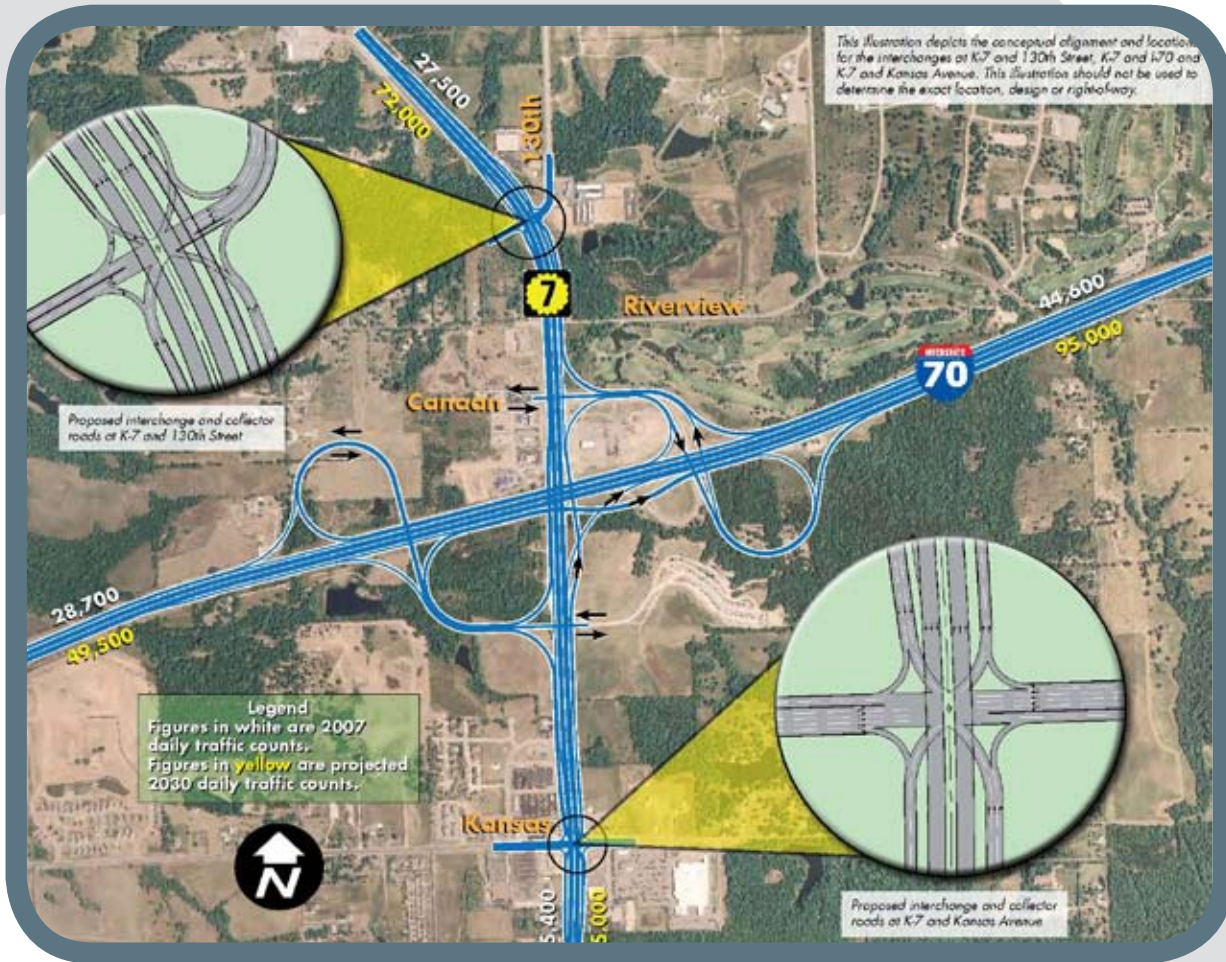
The preliminary design of the new K-7 and I-70 Interchange will include several phases of improvements. Currently there are two phases planned for the project. Phase 1 involves KDOT design and construction of the west half of the interchange. Construction will begin as soon as funding becomes available. Phase 2 includes construction of the remainder of the interchange (likely in multiple phases), which may not all be completed for several decades after the completion of the first phase.

Immediate improvements will involve the construction of a second left turn lane onto southbound K-7 from I-70/Canaan Center Drive intersection to reduce bottleneck congestion. The construction project will be let on May 15, 2009. Construction is scheduled to begin in July 2009 and will be completed by late November 2009.

More than 250 residents from Bonner Springs and stakeholders from across the metropolitan area attended last year's public meeting for the K-7 and I-70 Interchange. Most people expressed positive feelings about KDOT's plan to improve the interchange, especially given the bottlenecks at the existing intersection of K-7 and I-70/Canaan Center Drive.



Additional turn lane at K-7 and I-70/Canaan Center Drive intersection.



K-7 and I-70 Interchange Concept

Working Together FOR A BETTER FUTURE

In 2007, with input from the general public and local officials, a Memorandum of Understanding (MOU) was created between KDOT and the City of Bonner Springs to implement the recommendations of the K-7 Corridor Plan. As a result, the City has adopted the K-7 and I-70 Interchange Concept and includes it on the City's Transportation Plan Map (enclosed). KDOT will continue to coordinate with the Bonner Springs community and other municipalities throughout the design and construction of the interchange project to ensure that stakeholders are informed and encouraged to get involved with the project as it progresses. Look for:

- >>> Informative newsletters and postcards.
- >>> Announcements for and opportunities to attend public meetings.
- >>> Useful information on the project web site including:
 - Video** that depicts the experience of driving through the new interchange.
 - Driving directions** that will help drivers navigate through the area during construction.



The Schedule **WHAT'S HAPPENING**

The preliminary design process began in 2007 and will take several years to complete. The project has not been funded for final design or interchange construction. News announcements, public meetings, newsletters, and postcards will be used to keep the community informed over the course of the project.

www.k7andi70interchange.org



K-7 and I-70	Today	Tomorrow	Together
2007	Development of the K-7 and I-70 conceptual improvement alternative		
2008	Design of a second left turn lane onto southbound K-7 at the I-70/Canaan Center Drive intersection to reduce bottlenecks		Public Meeting (February 26)
2009	Construction of a second left turn lane onto southbound K-7 at the I-70/Canaan Center Drive intersection	Preliminary design of Phase 1 and 2 of the interchange continues	Public Meeting (May 5) Newsletter, Postcard, and News Announcements
2010		Preliminary design of Phase 1 and 2 of the interchange continues	Public Meeting (Mid-2010) Newsletter, Postcard, and News Announcements

>>>

>>>

>>>

NOTE: This handout is available in alternative accessible formats. To obtain an alternative format, contact KDOT, Transportation Information, Eisenhower Building, 700 SW Harrison, 2nd Floor West, Topeka, KS, 66603-3754, or (785) 296-3585 (Voice)/Hearing Impaired - 711.



QUESTIONS & COMMENTS

contact >>>

Tim Ross, Project Manager, GBA
tross@gbateam.com

Kimberly Qualls, Public Affairs Manager, KDOT
kqualls@ksdot.org

www.k7andi70interchange.org

K-7 & I-70 Interchange

Today, Tomorrow, Together

Welcome to the **May 5, 2009 public meeting** for the K-7 and I-70 Interchange project! The purpose of this meeting is to discuss the preliminary design plans for the new K-7 and I-70 Interchange and the construction of a second left turn lane at the I-70/Canaan Center Drive intersection onto southbound K-7. During this meeting you will have the opportunity to review and comment on:



The K-7 Corridor Management Plan divided K-7 into three different sections extending from the 223rd Street Interchange in Miami County on the south to K-5/Muncie Road in Leavenworth County on the north. As shown above, the K-7 and I-70 Interchange was examined as part of Section 2 of the Study.

>>> Visuals that describe the overall public involvement and design process for the K-7 and I-70 Interchange project.

>>> Detailed maps of the project area that show the preliminary design of the K-7 and I-70 Interchange as it has been developed thus far and the addition of the Canaan left turn lane at the I-70/Canaan Center Drive intersection.

>>> Video developed from the driver's perspective that shows what driving through the new interchange will be like once its multiple phases are designed and constructed.



www.k7andi70interchange.org



Share your thoughts at today's **open house** from **5 p.m. to 7 p.m.** with KDOT and the project team. You can also listen to a **short presentation** at **5:20 p.m. and 6:20 p.m.** (Both are identical, so if you miss the first one, you can listen to the second). Please be sure to fill out a comment card or share your comments with the court reporter at the comment table before you leave!